

# D-Light

- Attractive convex lightbox for a range of poster sizes
- Single-sided display for internal wall mounting
- **Aluminium snapframe sides** for quick and easy poster change
- Silver anodised **aluminium case** with 3mm opal **acrylic diffuser panel**
- Tube lighting (single or double depending on size)
- Key holes to rear for ease of installation
- Anti-glare **PET poster cover** ensures clarity of message
- Supplied complete with 2m cable and plug
- CE certificate supplied with each unit
- Also available in custom sizes and colours made to order (minimum recommended quantity: 5)



## In stock

Certain sizes made to order (see below)



## No assembly required



## Recyclable

Aluminium snapframe sides, aluminium case, acrylic diffuser panel and PET poster cover



Snapframe sides for quick and easy poster change. Image shows cable entry and 'pepperpot' ventilation cover to underside.



Opal acrylic lens panel can be removed for tube replacement



Custom sizes available (minimum order quantities apply)

Specification						
Poster Size	Display Area (w x h mm)	O/A Dimensions (w x h x d mm)	Lighting	Weight (kg)	Stock Status	Order Code
A3	273 x 420	308 x 423 x 82	1 x 8W	3.1	In stock	DLIGHTA3
A2	395 x 594	424 x 597 x 98	1 x 15W	5.8		DLIGHTA2
A1	570 x 841	592 x 844 x 120	2 x 18W	11		DLIGHTA1
A0	816 x 1189	828 x 1192 x 150	2 x 30W	18.3		UCLB250NA0
20" x 30"	484 x 762	510 x 765 x 108	1 x 18W	8	Made to order	UCLB250N23
30" x 40"	737 x 1016	750 x 1019 x 143	2 x 30W	14.9		UCLB250N34
500 x 700mm	475 x 700	500 x 703 x 110	1 x 18W	7.8		UCLB250NB2
700 x 1000mm	675 x 1000	692 x 1003 x 134	2 x 30W	13.8		UCLB250NB1

# Edgelit XT

Our new 'extra thin'  
LED snapframe



- Specially treated **acrylic panel** provides strong, even illumination across the entire surface
- Front-opening **aluminium snapframes** for quick and easy poster change (silver anodised 25mm profile)
- Anti-glare **PET poster covers** ensure clarity of message
- Slim, elegant design – single-sided units only 19mm deep
- No fragile tubes, bulbs or glass – ideal for busy, high-traffic locations
- 3m extension cables (available separately) enable flexible positioning
- CE certificate supplied with each unit
- Also available in custom sizes and colours made to order (minimum recommended quantity: 5)



**In stock**

Single-sided A2, A1, A0 and 30" × 40"



**No assembly required**



**Recyclable**

Aluminium snapframes, PET poster covers and acrylic panels



## LED illumination...

- Bright, even and long-lasting – 50,000+ hours life!
- Low-voltage – low power consumption and completely safe
- No need for qualified electrician to install
- No risk of bulb breakages – maintenance free



Front-opening snapframes for quick and easy poster change



Built-in on/off switch



Anti-glare PET poster covers

## Specification – Single-Sided

Poster Size	Display Area (mm)	O/A Dimensions (w × h × d mm)	Weight (kg)	Stock Status	Order Code
A4	190 × 277	242 × 329 × 19	2.6	Made to order	ULD25TN0A4
A3	277 × 400	329 × 452 × 19	3.4	Made to order	ULD25TN0A3
<b>A2</b>	400 × 574	452 × 626 × 19	4.2	<b>In stock</b>	LEDA2
<b>A1</b>	574 × 821	626 × 873 × 19	8.1	<b>In stock</b>	LEDA1
<b>A0</b>	821 × 1169	873 × 1221 × 19	13.5	<b>In stock</b>	LEDA0
20" × 30"	488 × 742	540 × 794 × 19	6.7	Made to order	ULD25TN023
<b>30" × 40"</b>	742 × 996	794 × 1048 × 19	10.8	<b>In stock</b>	LED34
500 × 700mm	480 × 680	532 × 732 × 19	6.4	Made to order	ULD25TN0B2
700 × 1000mm	680 × 980	732 × 1032 × 19	9.9	Made to order	ULD25TN0B1

## Specification – Double-Sided

Poster Size	Display Area (mm)	O/A Dimensions (w × h × d mm)	Weight (kg)	Stock Status	Order Code
A4	190 × 277	242 × 329 × 28	3.1	Made to order	ULD25CN0A4
A3	277 × 400	329 × 452 × 28	4		ULD25CN0A3
A2	400 × 574	452 × 626 × 28	5.8		ULD25CN0A2
A1	574 × 821	626 × 873 × 28	10		ULD25CN0A1
20" × 30"	488 × 742	540 × 794 × 28	8.4		ULD25CN023
30" × 40"	742 × 996	794 × 1048 × 28	14.4		ULD25CN034
500 × 700mm	480 × 680	532 × 732 × 28	8		ULD25CN0B2
700 × 1000mm	680 × 980	732 × 1032 × 28	13.2		ULD25CN0B1

# Snaplight

- Front-opening **aluminium snapframes** for quick and easy poster change
- 25mm snapframe profile with silver anodised finish
- Back lit system provides strong, even illumination
- Anti-glare **PET poster covers** ensure clarity of message
- Opal **acrylic diffuser panel** – removable for installation and tube replacement
- Galvanised steel backing (single-sided)
- Available in a range of sizes, single and double-sided
- Suitable for posters or transparencies
- CE certificate supplied with each unit
- Also available in custom sizes and colours made to order (minimum recommended quantity: 5)



**Made to order**

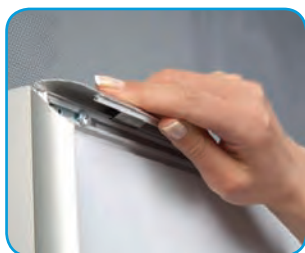


**No assembly required**



**Recyclable**

Aluminium snapframes, PET poster covers and acrylic diffuser panels



Front-opening snapframes



Anti-glare PET poster covers



Double-sided option with hangers

Specification – Single-Sided					
Poster Size	Display Area (mm)	O/A Dimensions (mm)	Weight (kg)	Lighting	Order Code
A3	275 × 389	327 × 450 × 100	3.2	1 × 32W	ULBT250NA3
A2	389 × 572	450 × 624 × 100	6.4	2 × 15W	ULBT250NA2
A1	572 × 819	624 × 871 × 100	11.8	5 × 15W	ULBT250NA1
A0	819 × 1167	871 × 1219 × 100	17.7	4 × 30W	ULBT250NA0
20" × 30"	486 × 740	538 × 792 × 100	8.5	2 × 18W	ULBT250N23
30" × 40"	740 × 994	792 × 1046 × 100	15	4 × 30W	ULBT250N34
40" × 60"	994 × 1502	1046 × 1554 × 100	25	5 × 58W	ULBT250N46
500 × 700mm	478 × 678	530 × 730 × 100	8.1	2 × 18W	ULBT250NB2
700 × 1000mm	678 × 978	730 × 1030 × 100	13.4	3 × 30W	ULBT250NB1

Specification – Double-Sided					
Poster Size	Display Area (mm)	O/A Dimensions (mm)	Weight (kg)	Lighting	Order Code
A3	275 × 389	327 × 450 × 110	3.4	1 × 32W	ULBC250NA3
A2	389 × 572	450 × 624 × 110	7.2	2 × 15W	ULBC250NA2
A1	572 × 819	624 × 871 × 110	12.8	5 × 15W	ULBC250NA1
A0	819 × 1167	871 × 1219 × 110	21	4 × 30W	ULBC250NA0
20" × 30"	486 × 740	538 × 792 × 110	8.9	2 × 18W	ULBC250N23
30" × 40"	740 × 994	792 × 1046 × 110	16.9	4 × 30W	ULBC250N34
40" × 60"	994 × 1502	1046 × 1554 × 110	27	5 × 58W	ULBC250N46
500 × 700mm	478 × 678	530 × 730 × 110	8.1	2 × 18W	ULBC250NB2
700 × 1000mm	678 × 978	730 × 1030 × 110	16	3 × 30W	ULBC250NB1



# Illuminated Totem

- Double-sided freestanding poster display for internal use
- Elegant convex design
- Front-opening **snapframe sides** for quick and easy poster change
- Silver anodised **aluminium casing** with silver coated **steel base**
- Anti-glare **PET poster covers** (permanently fixed on one side with magnetic seal on the other)
- Fluorescent tube lighting (single or double depending on size)
- Supplied complete with 2m cable and plug
- CE certificate supplied with each unit



**Made to order**



**20 minutes to assemble**



**Recyclable**

Aluminium casing/snapframe sides, steel base, PET poster covers and acrylic diffuser

Specification				
Poster Size (w x h mm)	O/A Dimensions (w x h x d mm)	Weight (kg)	Lighting	Order Code
600 x 1700	650 x 1720 x 350	28	1 x 58W	UTTM001000
700 x 1700	750 x 1720 x 350	30.8	1 x 58W	UTTM002000
800 x 1700	850 x 1720 x 370	36.5	2 x 58W	UTTM003000



# Decorative Totem

- Double-sided freestanding poster display for internal use
- Elegant convex design
- Front-opening **snapframe sides** for quick and easy poster change (top half only)
- Embossed metal effect **polystyrene panels** at bottom with silver coated **steel base**
- Anti-glare **PET poster covers** (permanently fixed on one side with magnetic seal on the other)
- Fluorescent tube lighting (single or double depending on size)
- Supplied complete with 2m cable and plug
- CE certificate supplied with each unit



**Made to order**



**20 minutes to assemble**



**Recyclable**

Aluminium casing/snapframe sides, polystyrene panels, steel base, PET poster covers and acrylic diffuser

Specification				
Poster Size	O/A Dimensions (w x h x d mm)	Weight (kg)	Lighting	Order Code
A1	650 x 1720 x 350	30	1 x 18W	UTTM011010
A0	880 x 1720 x 370	36	2 x 36W	UTTM011030
500 x 700mm	560 x 1720 x 350	26	1 x 18W	UTTM011040
700 x 1000mm	750 x 1720 x 350	32	1 x 30W	UTTM011020



# Freelight Plus

The most cost-effective lightbox on the market

EU Design Registration No. 000433131

- Uses existing in-store lighting for illumination
- Flat-pack design – easy to assemble and install
- Graphic inserts quick and easy to update

## Each kit includes:

- Outer lens panel
- Opal 'lampshade' PVC insert – ideal for translucent vinyl or screen/digitally printed graphics
- Pair of end caps
- Ceiling hooks and eyelets



Each kit includes ceiling hooks and 2 styles of 'button' eyelets



Coloured and/or pad printed end caps available (minimum order quantity: 500)



## Existing Lighting

Suspended ceilings offer prime advertising space and, with existing lighting, are perfect for Freelight Plus



## Freelight Plus

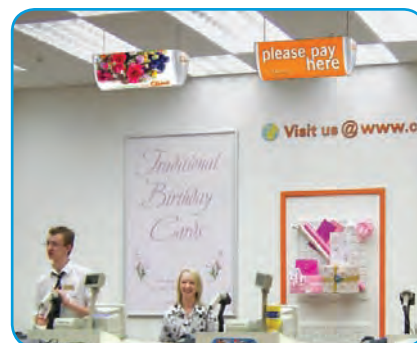
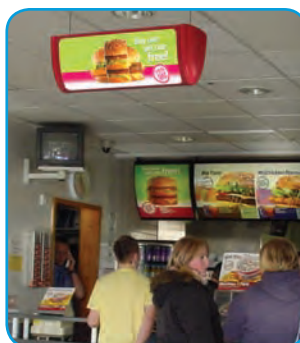
With no need for wires or power, Freelight Plus is quick to assemble and simply hooks into place using the fixing kit supplied



## High impact, low cost advertising

Most of the benefits of a traditional lightbox, but without the cost and inconvenience!

*Freelight Plus offers unbeatable **long-term return on investment** – simply change the insert for new promotions or leave in for permanent display*



Specification		
O/A Dimensions (w x h x d mm)	Weight (kg)	Order Code
648 x 256 x 226	1.3	FREELIGHTUNB



**In stock**



**3 minutes to assemble**



**No tools assembly**



**Recyclable**  
ABS end caps and polypropylene outer lens panel



## Halo Lightbox

- Permanently branded lightbox for interior wall mounting
- Stunning 'halo' effect
- 3 standard shapes available
- Supplied complete with cable and plug
- CE approved



**Made to order**

Minimum order quantity: 100



**Recyclable**

Steel and PETG

Specification	
Shape	Size (mm)
Oval 1	585 × 432
Oval 2	695 × 290
Round	500 (diameter)



## Illuminated Info Board

- High impact poster display
- Front-opening aluminium snapframes for quick and easy poster change
- Silver anodised finish with anti-glare PET poster covers
- Single and double-sided versions available
- Optional brochure shelves available (see page 42 for details)
- CE certificate supplied with each unit



**Made to order**

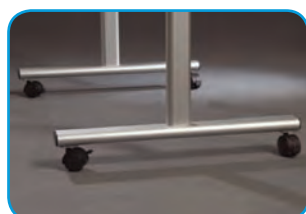


**10 minutes to assemble**



**Recyclable**

Aluminium snapframes, aluminium stand,  
PET poster covers and acrylic diffuser panel



Optional wheels



Anti-glare  
PET poster covers

Specification				
Poster Size	O/A Dimensions (w × h × d mm)	Type	Weight (kg)	Order Code
A1	740 × 1760 × 450	Single-sided	17.5	UIB305TNA1
		Double-sided	17.9	UIB305CNA1
500 × 700mm	646 × 1760 × 450	Single-sided	15	UIB305TNB2
		Double-sided	15.4	UIB305CNB2
700 × 1000mm	853 × 1760 × 450	Single-sided	20.5	UIB305TNB1
		Double-sided	20.9	UIB305CNB1

