

# Sentinel®

EU Design Registration No. 000190954

## The Ultimate Forecourt Poster Sign

External poster signage is a powerful advertising tool. With 70% of purchase decisions made in-store, driving footfall into the store is obviously key. And nothing does that better than targeted, high impact poster advertising outside the store. The use of strong graphics displayed in a well designed sign will ensure that first impressions count for success.



Magnetic poster covers for quick and easy poster change



Coloured/printed borders available (minimum order quantity: 25)



Custom colour bases available (minimum order quantity: 100)

Now available in 3 stock sizes:



30" x 40"

**NEW!** A0

40" x 60"

Sentinel working hard for major retailers across the country

Specification				
Poster Size	O/A Dimensions (w x h x d mm)	Display Area (mm)	Weight (kg) Empty/Full	Order Code
30" x 40"	935 x 1429 x 704	754 x 1008	27/99	SEN34MK4GG
A0	979 x 1603 x 704	820 x 1169	31/103	SENA0MK4GG
40" x 60"	1171 x 1942 x 894	995 x 1503	57/169	SEN46MK4GG

Also available in custom colours (minimum order quantities apply).



**In stock**



**Recyclable**

Steel frame, polycarbonate poster covers and part recycled polyethylene base



**8 minutes to assemble and fill base**

Ideally by 2 people

## Trolley & Hose for Sentinel®, Sightmaster 2 and Cyclone 2

The purpose-designed trolley enables easy and safe movement of Sentinel, Sightmaster 2 and Cyclone 2 forecourt signs, whilst the hose gives convenient assistance for filling bases with water. The adaptor is for use with Sightmaster 2 only.



Moving Sentinel couldn't be easier with our purpose-designed trolley

Specification			
Item	O/A Dimensions (mm)	Weight (kg)	Order Code
Trolley	225 x 1220 x 225	2.5	TROLLEY
Adaptor	90 x 45 x 48	0.125	TROLLEYADAPTOR
Hose	5000 x 13	1	SENHOSE



**In stock**

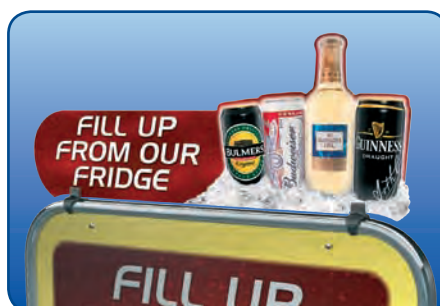


Trolley

Hose

## Tactical Header for Sentinel®

- Simply clips onto Sentinel frames
- Ideal for short-term promotions – additional advertising site for minimal cost
- Gloss white PVC/polypropylene panel, ideal for screen/digitally printed graphics or vinyl application



**Made to order**  
Clips held in stock



**Recyclable**  
PVC/polypropylene panel

Headers can create eye-catching silhouettes and added 'theatre'

# Sightmaster Pro



Patent No. PCT/TR09/000148

Striking 'all black' snapframe poster sign

- Front-opening aluminium snapframes for quick and easy poster change
- Water-fillable LLDPE base for optimum stability
- Built-in wheels for ease of movement
- Heavy duty mounts ensure stability by allowing panel deflection in the wind
- Anti-glare PET poster covers ensure clarity of message
- Soft round corners for safety



**In stock**  
A1



**10 minutes to assemble and fill base**



**Recyclable**  
Aluminium frames, PET poster covers and LLDPE base



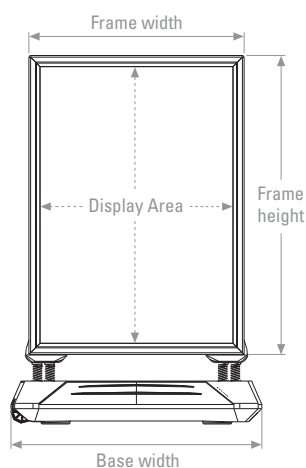
Front-opening snapframes for quick and easy poster change



Water-fillable base for optimum stability



Built-in wheels for ease of movement



Specification								
Poster Size	Display Area (mm)	Dimensions (mm)			Weight (kg)		Stock Status	Order Code
		Base (w × d)	Frame (w × h)	O/A Height	Packaged	Assembled Empty/Full		
<b>A1</b>	586 × 833	720 × 580	666 × 913	1165	14.9	11.5/41.5	<b>In stock</b>	ECWVMA1MB/F
<b>A0</b>	833 × 1181	900 × 630	913 × 1261	1510	20	16.6/53.1	Made to order	UTWM/USWPA0
20" × 30"	500 × 754	720 × 580	580 × 834	1085	14.6	11.2/41.2		UTWM/USWP23
30" × 40"	754 × 1008	900 × 630	834 × 1088	1340	20	16.6/53.1		UTWM/USWP34
500 × 700mm	492 × 692	720 × 580	572 × 772	1020	14.3	10.9/40.9		UTWM/USWPB2
700 × 1000mm	692 × 992	900 × 630	772 × 1072	1320	19.1	15.7/52.5		UTWM/USWPB1



# Sightmaster 2

Stylish snapframe forecourt sign  
in a range of poster sizes

- Front-opening **aluminium snapframes** for quick and easy poster change
- Rigid 'kick proof' **ACM back panel**, suitable for dry-wipe and liquid chalk pens
- Water-fillable **HDPE base** with built-in wheels and carry handle
- Heavy duty mounts ensure stability by allowing panel deflection in the wind
- Anti-glare **PET poster covers** ensure clarity of message
- Soft round corners for safety



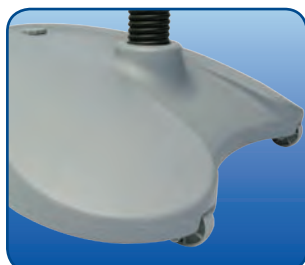
**In stock**



**6 minutes to assemble and fill base**



**Recyclable** Aluminium frames, aluminium composite back panel, PET poster covers, steel brackets and HDPE base. Mechanical fixings throughout for easy 'end of life' recycling.



Built-in wheels for ease of movement



Snapframe opening tool (left) and 2-piece spanner (right) included with each unit



Purpose-designed trolley available separately (see page 49 for details)



Available in 3 stock poster sizes

Specification						
Poster Size	Display Area (w × h mm)	O/A Dimensions (w × h × d mm)	Frame Size (w × h mm)	Base Dimensions (w × h mm)	Weight (kg) Empty/Full	Order Code
A1	576 × 821	800 × 1193 × 505	646 × 893	800 × 505	18/37	ECWWMA1HB/SC
A0	823 × 1173	960 × 1559 × 610	893 × 1240	960 × 610	25/77	ECWWMA0HB/SC
30" × 40"	744 × 997	960 × 1386 × 610	814 × 1068	960 × 610	23/76	ECWWM34HB/SC

# Cyclone 2

Patent No. GB 2464696

Stable and stylish, robust and refined

- Double-sided 40" × 60" poster display
- Front-opening aluminium snapframes for quick and easy poster change
- White 'Frameworkz' frames as standard – available printed or suitable for vinyl application (see page 30)
- 700 micron PET poster covers give excellent clarity, fixed along top edge for ease of poster change
- Steel cradle with hard-wearing pivots allows panel to move in the wind
- Robust water-fillable HDPE base for optimum stability
- Built-in wheels for ease of movement
- Round corners throughout for safety



**In stock**



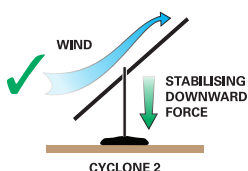
**8 minutes to assemble and fill base**  
Ideally by 2 people



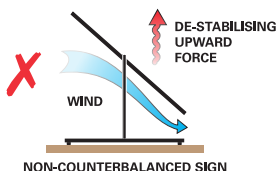
### Recyclable

Aluminium frames, steel cradle, PET poster covers, polypropylene back panels and part-recycled HDPE base

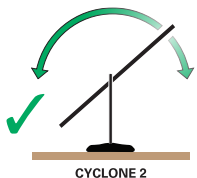
**Cyclone 2's counter-balanced panel deflects wind safely and creates interest through movement...**



CYCLONE 2



NON-COUNTERBALANCED SIGN



CYCLONE 2



BASE PIVOTED SIGN



Recommended method of moving once filled (trolley available separately)



Front-opening snapframes for ease of poster change



Frames available printed or suitable for vinyl application



Water-fillable base for optimum stability



Hard-wearing pivots allow panel to move in the wind



Built-in wheels for ease of movement

Specification				
Poster Size	Display Area (w × h mm)	O/A Dimensions (w × h × d mm)	Weight (kg) Empty/Full	Order Code
40" × 60"	984 × 1492	1206 × 1831 × 698	44.5/99.5	CYCLONE2



# Defender

## Permanent large format poster display

- Front-opening **aluminium snapframes** (38mm profile) for quick and easy poster change
- Anti-glare **PET poster covers** give excellent clarity
- Heavy concrete bases guarantee stability with a minimal footprint
- **Steel sub-frame** with panel area below poster frame suitable for permanent branding
- Silver anodised finish as standard – also available in custom colours (minimum order quantities apply)



**In stock**



**8 minutes to assemble**  
Ideally by 2 people



**Recyclable**

Aluminium snapframes, steel sub-frame  
and PET poster covers



30" x 40" size shown.  
Also available for 40" x 60" posters.

Specification				
Poster Size	Display Area (w x h mm)	O/A Dimensions (w x h mm)	Weight (kg) inc. base	Order Code
30" x 40"	733 x 987	818 x 1447	71	DEF34WA
40" x 60"	987 x 1495	1072 x 1855	112	DEF46WA

# Sentinel® Banner

## Our market-leading forecourt sign with printed banner display

- **Steel frame** with silver anodised finish as standard – also available in custom colours (minimum order quantity: 25)
- Water-fillable **polyethylene base** precisely calculated for optimum stability (made using **recycled materials**)
- Black base as standard to hide dirt and marks – also available in custom colours (minimum order quantity: 100)
- Built-in wheels – easy to move with our purpose-designed trolley
- Supplied complete with set of elasticated banner ties
- Digitally printed banners available to order (750gsm **reinforced light block PVC** as standard)



**In stock**



**8 minutes to assemble and fill base**  
Ideally by 2 people



**Recyclable**

Steel frame, part recycled polyethylene  
base and optional reinforced PVC banner



Elasticated banner ties supplied



Hose and purpose-designed trolley available separately.  
See page 49 for details.

Specification				
Banner Size (mm)	O/A Dimensions (w x h x d mm)	Weight (kg) Empty/Full	Stock Colour Frame/Base	Order Code
742 x 996	935 x 1429 x 704	25/97	Silver/Black	SENBAN34GG
996 x 1504	1171 x 1942 x 894	38/150		SENBAN46GG